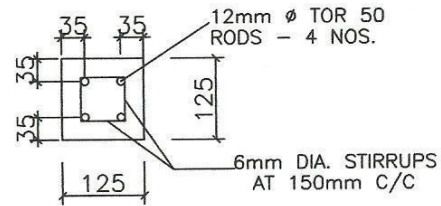
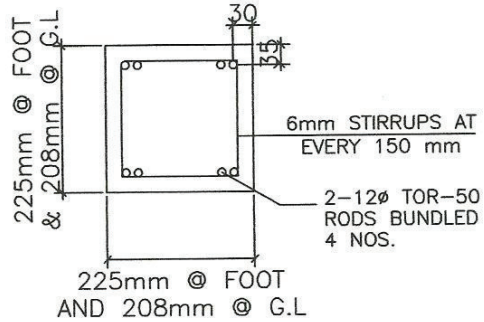


CURTAILMENT LENGTH OF TWO DIAGONALLY OPPOSITE RODS SHALL BE 3.5 Mtrs. AND 4.0 Mtrs FOR OTHER DIAGONAL RODS.



TOP PLAN



BOTTOM PLAN

NOTE:-


1. CEMENT CONCRETE GRADE M25.
2. TOR 50 GRADE STEEL TO BE USED.
3. MINIMUM CONCRETE COVER 30mm.
4. BUNDLED BARS SHALL BE TIED TOGETHER TO ENSURE THE BARS REMAINING TOGETHER.
5. APPROXIMATE QUANTITY OF MATERIALS REQUIRED PER POLE:

M 25 CONCRETE = 0.285 Cu.m.

DETAILS OF REINFORCEMENT.

TOR 50 STEEL 45.4 Kg. AS FOLLOWS:

- 4 NOS. 12 mm RODS EACH 9 M
- 2 NOS. 12 mm RODS EACH 4 M
- 2 NOS. 12 mm RODS EACH 3.5 M

S.NO	DETAILS OF REVISIONS MADE	AGM	DGM	GM
Signatures	All dimensions are in mm unless otherwise stated.			
Chd	REINFORCEMENT DETAILS OF 9.0 M/150 Kg. R.C.C POLE WITH SQUARE SECTION FACTOR OF SAFETY=2.0	Approved:		
Sub				
SCALE: N.T.S				